

CELEBRATING LIFE
REMEMBERING WITH LOVE
Since 1870



MORRISSETT

Funeral and Cremation Service
A Life Celebration Home

6500 Iron Bridge Road
N. Chesterfield, VA 23234
804-275-7828
www.morrissett.com
staff@morrissett.com

General Price List
Casket Price List
Outer Burial Container Price List

Prices are effective as of October 1, 2023

Availability and Price are subject to change without prior notice.

Locally Owned and Operated



Proud to be the only Funeral Home in Virginia to receive the "Pursuit of Excellence" award
by the National Funeral Directors Association for
2013, 2014, 2015, 2016, 2017, 2018, 2019, 2020, 2021 & 2022.

International winner for the "Best of the Best" award in 2015 & 2020.
(This is out of 11,000 funeral homes in the USA & 49 other countries around the World.)



Follow us on Facebook: @MorrissettFuneralandCremationService

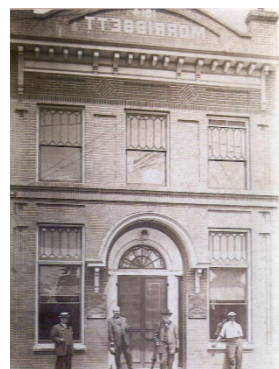
The History of Morrissett Funeral & Cremation Service



In 1870, shortly after the end of the Civil War, Beverly H. Morrissett, a Southside cabinet maker, established B.H. Morrissett Funeral Home at No. 17 W. 7th Street in Manchester, Virginia, now South Richmond. His sons, William J. Morrissett and Jefferson T. Morrissett, joined the business in 1893 and 1894 respectively and, with this addition the name was changed to B.H. Morrissett and Sons. The funeral home operated on 7th Street until

1914 when it was relocated to 19th and Hull Streets. After B.H. Morrissett's death in 1915 the funeral home was run by his sons. In 1920 William's son, Stanley B. Morrissett, became the third generation to serve our community. The company continued at the Hull Street location until 1938 when a new facility was built at 318 Cowardin Avenue. According to news accounts of this

era, Morrissett Funeral Home was the oldest continuously operated business in South Richmond. With Jeff's passing in 1940 and Willie's death in 1960, Stanley was left to continue his family's traditions. Robert G.



Danielson was hired in 1962 to manage the company. Upon Stanley's death in 1966, his sister, Esther B. Morrissett became the owner, with Mr. Danielson continuing as manager. In 1969, Bob and his partner Walter E. Mittelstadter, Jr. purchased the company and in 1974 built a new facility at 6500 Iron Bridge Road. Longtime

employees, Richard M. Booker and Laurence F. Spiaggi, purchased Walter's interest in the funeral home in 1989 and upon Mr. Danielson's retirement in 1997, they were able to purchase the entire business. On December 31, 2015, Dick Booker retired after 47 years of service to our firm. Larry Spiaggi and Sue Danielson became the sole owners. January 1, 2022, after many years of serving the community, Larry and Sue decided to retire. They sold the business to the General Manager, Margaret Edie and along with her dedicated staff, continue to offer our community the care and service that has been expected of us since 1870.



Thank you for choosing Morrissett Funeral & Cremation Service. We strive to offer the highest level of service to every family we serve.

We are proud to be the only funeral home in Central Virginia to place all of our prices on our website and here in booklet form. We feel that hiding the cost of our services or merchandise is unfair to you as the consumer. All of the costs associated with arranging a meaningful farewell service is clearly laid out within these pages.

Our highly trained staff of funeral directors and event planning experts are always here to help further explain everything that we offer. They are eager to explore any ideas that you may have in preparing a truly unique Life Remembrance Experience.

INDEX

General Price List - Information Disclosures	Page 1
What Makes us Unique	Page 1
Our Service Plus Explanation	Page 2
Our Service Satisfaction Guarantee	Page 2
Our General Price List	Pages 3 - 6
Our Casket Price List	Pages 7 - 14
Our Outer Burial Container Price List	Pages 15 - 18
Our Urn, Keepsake, and Remembrance Jewelry Price List	Pages 19 - 22
Urn Engraving Form	Page 23
Our Cash Advance Items Price List	Page 24
Publix Catering Order Sheet	Page 25
Brock's BBQ Catering Menus	Page 26
Notes	Page 27

GENERAL PRICE LIST - Information Disclosures

These prices are effective as of October 1, 2023 but are subject to change without notice.

The goods and services shown below are those we can provide to our customers. You may choose only the items you desire. However, any funeral arrangements you select will include a charge for our basic services and overhead. If legal or other requirements mean you must buy any items you did not specifically ask for, we will explain the reason in writing on the statement we provide describing the funeral goods and services you selected.

This list does not include prices for certain items that you may ask us to buy for you, such as cemetery or crematory services, flowers and newspaper notices. The prices for these items will be shown on your bill or the statement describing the funeral goods and services you selected. The funeral home may receive bulk discounts for such items. Said discounts will be retained by the funeral home. Certain funeral services may be provided off premises by other funeral service providers.

Please understand that payment for goods and services is expected prior to the services being rendered. For your convenience, we accept cash, check, credit card (Visa, Master Card, American Express or Discover), a verifiable and irrevocable insurance assignment, or financing through Lending USA.

OUR VISION

To Show Our Community the Value of Every Person's Life

A few of the things that make us unique...

WE ARE FAMILY OWNED AND OPERATED In this region, dominated by huge chains and multi-national conglomerates, we proudly remain independent. Our funeral home owners and our staff believe that we are accountable to you, not far-away stockholders. We are kind, gentle, and knowledgeable men and women who respect your right to choose without undue influence and believe the most valuable thing we own is our reputation. Every staff associate is expected and empowered to do anything it takes to serve your family well.

LIFE CELEBRATION We join your family in co-creating a celebration of life which truly tells the story of who you are and what you are passionate about. Every life has a story. A funeral is not just a day in a lifetime; it is a lifetime in a day.

MORE OPTIONS We provide more options than any other firm because we serve a varied clientele who appreciate a variety of options. We provide these simply to make it easy for you to choose the options that best fit your needs.

PRICE AND VALUE We understand that we only get one chance to perform our work sensitively and correctly. There are other funeral homes that proclaim low prices but cut corners with staff, facilities, and procedures and there are other funeral homes that are more expensive that simply do not give the level of service that we provide. We attract and retain the best staff possible; our people provide consistently outstanding care to those we serve. Our facilities are modern, and our staff is easily the best in the Central Virginia area. Every family we serve receives an after-care visit along with a follow-up survey and we are proud that they overwhelmingly report they would call us again. These responses confirm the importance of giving people quality and value for what they spend.

BEFORE THE TIME OF NEED We provide free assistance with pre-planning. You also have the option of locking in today's prices by funding your plan. This allows you the peace of mind knowing your plan is protected from price increases and inflationary trends. (Or simply placing your wishes on file and allowing the costs to be paid at the time of need.) Every family is entitled to receive our FREE Family Planner.

SERVICE PLUS With all of our service plans we provide Service Plus. See the next page of this price list for a list of items that are included with our basic service charge at no additional cost.

AFTER THE FUNERAL The services we offer after the funeral are equally noteworthy. We provide a valuable after-care package that includes materials on coping with the grief process, valuable lists of details to take care of after the funeral, and information about veterans and social security benefits.

All our services include...
Exclusive, No Charge...
Service Plus

\$5,000 Child / Grandchild Protection Plan

For choosing our funeral home, we will provide up to \$5,000 funeral protection certificate for use at our facility for the protection of the children and grandchildren (until the age of 18) of the insured deceased. This protection is extended up to \$10,000 per child, to match any pre-funded arrangements made.

Celebration of Life Video Tribute

Specially created video to capture the best of your loved one's life.

Recording and Webcast of Service

For those family members that are not able to attend the service or for those that simply want to watch the service again. (This feature is available to services performed in our facility.)

Celebration of Life Display

This is a simple way to share one's life, family, interests, hobbies or accomplishments by displaying items during visitation. Our team consists entirely of Life Celebration experts, with the goal of creating a service that is designed uniquely for the person whose life we are remembering.

Comfort Dogs

We offer Virginia's first fully trained comfort animals for use in a funeral environment. For the majority of our guests, these two chocolate labs, Hope & Peace, bring a great calm to a sometimes very stressful situation. Especially when it comes to children, these lovable dogs offer a beautiful distraction to the matter at hand.

Online Obituary

Providing your loved one's obituary online allows friends and family near and far the ability to view it and leave messages. You may also link the obituary to your Facebook page, or email it, to share with family and friends.

Music Service

We offer an endless library of music to assist in customizing your service. We also invite you to bring your recordings or favorites to be played during the service.

Fallen Heroes Program

Our funeral home offers our services for no charge to any active military service person or public safety professional that is killed in the line of duty.

Aftercare Services

We have a dedicated team of grief specialists that will follow up with each family after the funeral service. They will invite you to participate in our support groups and keep in contact for up to a year to offer support and guidance for you to use as you see fit.

Portability of Pre-Arranged Funerals

All of our pre-arranged funerals are transferable to other funeral homes around the country. If you have already pre-planned with another funeral home in our area, we can easily assist you in transferring those arrangements to our funeral home. We will then provide the same merchandise and upgrade you to our level of service at no additional cost to you.

SERVICE SATISFACTION GUARANTEE

Our staff is courteous and sympathetic... Our facilities are comfortable and immaculate...Our services are handled with dignity and respect. If you are not completely satisfied with any of our professional services or facilities, you will not be charged for that service.

GENERAL PRICE LIST

1	<u>Basic Services of Funeral Director and Staff:</u>	\$2,995.00
	Our fee for the basic services of funeral director and staff includes, but is not limited to, staff that is available 24 hours a day to respond to initial request for service; arrangement conference with family and responsible parties; arrangement of ceremony; preparation and filing of necessary authorizations and permits; recording vital statistics; preparation and placement of obituary notice; and coordination with those providing other portions of the funeral, e.g., cemetery, clergy/officiant, vault companies, police departments, crematory and others as required. Also included in this charge are overhead expenses relative to our facilities such as sheltering of remains, professional licensing, legal and accounting fees, insurance, building and utility expenses, parking lot and grounds, maintenance, taxes, equipment, furnishings, inventory costs, recordkeeping, secretarial and administrative expenses, as well as payroll and health benefits for full time staff.	
	<i>This fee for our basic services and overhead will be added to the total cost of the funeral arrangements you select. (This fee is already included in our charges for direct cremations, immediate burials, and forwarding or receiving remains.)</i>	
2	<u>Use of Facility, Staff and Equipment Fees:</u>	
	A. Visitation/Viewing at the Funeral Home	
	Our services include set up of visitation, use of visitation room, displaying of floral arrangements, use of music library, use of audio/visual equipment, memory tables, display easels, supervision, and assistance during the visitation.	
	1. One Day Visitation or portion thereof	\$520.00
	2. Additional Day(s) Visitation or portion thereof (per day)	\$320.00
	3. Private family viewing (up to 1 hour, for immediate family only, up to 25 people) (Our Funeral Home requires Basic Care Preparation with this selection)(\$150) 4.C.	\$175.00
	4. In Person Identification View prior to disposition (up to 3 people for 5 minutes)	\$50.00
	5. After Hours room rental per hour (from 9 p.m. to 9 a.m)	\$100.00
	6. Electronic Identification view (I.D. required prior to cremation by Virginia law)	No Charge
	B. Visitation at Other Facility	
	Our services include local transportation of decedent, set up of visitation, display of floral arrangements, use of music library, memory tables, display easels, supervision and assistance during the visitation.	
	1. One Day Visitation or portion thereof	\$520.00
	2. Additional Day(s) Visitation or portion thereof (per day)	\$320.00
	C. Funeral Service at the Funeral Home	\$720.00
	Our services include coordinating the arrangements, supervision of the funeral, use of our chapel and all equipment necessary including organ/piano, use of music library, audio/video equipment, floral display stands, staff to assist with parking, supervision and staff at the committal or other disposition service.	
	D. Funeral at Other Facility	\$720.00
	Our services include coordinating the arrangements, supervision of the funeral, all equipment necessary including floral display stands, staff to assist with parking, supervision and staff at the committal or other disposition service.	
	E. Funeral Service at the Funeral Home with One Hour Visitation Prior	\$875.00
	Our services include coordinating the arrangements, supervision of the funeral, use of our chapel and all equipment necessary including organ/piano, audio/video equipment, use of music library, floral display stands, staff to assist with parking, supervision and staff at the committal or other disposition service. (\$175 per hour will be added for each additional hour of visitation.)	

2

Use of Facility, Staff and Equipment Fees: (Continued)

- F. Funeral Service at Other Facility with One Hour Visitation Prior \$875.00
Our services include coordinating the arrangements, supervision of the funeral, all equipment necessary including floral display stands, staff to assist with parking, supervision, and staff at the committal or other disposition service. (\$175 per hour will be added for each additional hour of visitation.)
- G. Memorial Service at the Funeral Home \$620.00
Our services include coordinating the arrangements, supervision of the service, use of our chapel and all equipment necessary including organ/piano, audio/video equipment, music library, floral display stands, memory tables, and display easels.
- H. Memorial Service at Other Facility \$450.00
Our services include coordinating the arrangements, supervision of the service, all equipment necessary including floral display stands, memory tables, and display easels.
- I. Memorial Service at Funeral Home when no other services are provided \$1,895.00
Our services include coordinating the arrangements, supervision of the service, use of our chapel and all equipment necessary including organ/piano, audio/video equipment, music library, floral display stands, memory tables, and display easels.
- J. Graveside Service \$575.00
Our services include coordinating the arrangements, supervision of the service, all equipment necessary including sound system, register stand, speaker's podium, and staff to assist with parking at the cemetery.
- K. Graveside Service with One Hour Visitation Prior \$700.00
Our services include coordinating the arrangements, use of visitation room, display of floral arrangements, use of audio/visual equipment, music library, memory tables, display easels, supervision, and assistance during the visitation and the service, all equipment necessary including sound system, register stand, speaker's podium, and staff to assist with parking at the cemetery. (\$175 per hour will be added for each additional hour of visitation.) (For a procession add \$175 + service car + escort fees.)
- L. Certified Funeral Celebrant \$395.00
A Celebrant is a person who is trained and certified to meet the needs of families during their time of loss. They serve by providing a ceremony that is personalized to reflect the personality and lifestyle of the deceased, incorporating those unique stories, songs and experiences that define a life lived well.
- M. Reception Room \$495.00
Our reception room is available for use prior to or following a service and/or prior to, during, between, or following a visitation(s). The use of the room is for a set amount of time, up to 2 hours, plus 1 hour of prep time. Use of the room includes; utensils, plates, napkins, coffee, tea, lemonade and water stations, and a dedicated attendant to set up, clean up, and to assist the family. Catering is available at an additional cost.
- Additional Reception Room Hours: Additional 4-6 hours** \$395.00
- N. Filing of Death Certificate \$150.00
Filing of Death Certificate when not the primary funeral home (anatomical donation or out of state funeral home)

3

Embalming:

Embalming is not required by law. Embalming may be necessary, however, if you select certain funeral arrangements, such as a funeral with viewing. If you do not want embalming, you usually have the right to choose an arrangement that does not require you to pay for it, such as direct cremation or immediate burial.

- A. Embalming of decedent \$795.00
- B. Post autopsy or organ, tissue, or bone donation (additional charge) \$195.00
- C. Embalming of decedent in excess of 300 lbs. (additional charge) \$175.00
- D. Preparation of decedent for public viewing without embalming (Green Burial) \$595.00

4

Other Preparations of Decedent:

A.	Cosmetology, Grooming, Dressing, & Prepare for Presentation	\$225.00
B.	Derma Surgery (extensive) (Per Hour)	\$50.00
C.	Recommended Basic Care when not embalmed (<i>bathing, disinfecting & dressing</i>)	\$150.00
D.	Basic Refrigeration of unembalmed decedent	\$150.00
	<i>(Our policy requires refrigeration upon receiving decedent into our care.)</i>	
E.	Extended sheltering of decedent (per day or portion thereof)	\$25.00
	<i>(* Extended sheltering charges start after 10 days in our custody. Fee increases to \$50 per day after 30 days)</i>	

5

Automotive Equipment:

These charges are for local service; beyond 35 miles add \$3.00 per mile one way, per vehicle, plus expenses. (Tolls, Hotels, etc.)

A.	Transfer of decedent to Funeral Home	\$475.00
B.	Transfer of decedent to Airport, Medical Examiner or other offsite location	\$475.00
C.	Out of state over night transfer fee for funeral home staff accomidations	\$300.00
D.	Hearse (for funeral)	\$450.00
E.	Lead/Service Car	\$175.00
F.	Equipment/Service Van	\$175.00
G.	Limousine (8 passenger for 3 hours) (\$75 per each additional or portion of an hour)	\$450.00

6

Funeral Merchandise:

A.	Caskets	\$795.00	to	\$8,285.00
	<i>(A complete price list is included with this GPL.)</i>			
B.	Outer Burial Containers	\$1,350.00	to	\$3,500.00
	<i>(A complete price list is included with this GPL.)</i>			
C.	Cremation Caskets	\$795.00	to	\$4,285.00
	<i>(A complete price list is included with this GPL.)</i>			
D.	Cremation Urns & Vaults	\$54.00	to	\$695.00
	<i>(A complete price list is included with this GPL.)</i>			
E.	Remembrance Stationery - Standard Package			\$295.00
	<i>This package includes a Register Book, Custom Memorial Folders, Custom Thank You Cards, Custom Video Tribute on DVD, and 8 Bookmarks.</i>			
1.	Register Book	\$55.00	to	\$75.00
2.	Acknowledgement Cards (per 25 + Envelopes)	\$30.00	to	\$50.00
3.	Memorial Folders (per 50)	\$30.00	to	\$50.00
4.	Prayer Cards (per 98) (<i>Lamination cost an additional \$1.00 per card.)</i>			\$50.00
5.	Laminated Bookmarks (per 4)			\$12.50
6.	Church Bulletin (per 50)			\$75.00
7.	Life Tribute Video (If we do not provide basic service)			\$150.00
F.	Air Shipment Tray (Casketed decedent)			\$175.00
G.	Combo Unit (Serves as a temporary casket and airtray combined)			\$225.00
H.	Disaster Pouch			\$155.00
I.	Outer clothing	\$97.00	to	\$147.00
J.	Underclothing (sets for men & women)	\$15.00	&	\$25.00
K.	Temporary Grave Marker			\$30.00
L.	Flag Cases	\$78.00	to	\$258.00
M.	Remembrance Jewelry	\$55.00	to	\$1,999.00
N.	Catering (25 to 200) (Price estimate depends on quantity and supplier)	\$125.00	to	\$4,750.00
O.	Flowers	\$75.00	to	\$750.00
P.	Burial Flag (additional from what is provided to the veteran)			\$150.00
Q.	Dove Release (Up to 14 White Doves that have been humanely raised and trained.)			\$300.00
R.	Butterfly Release (Time and Weather restrictions)			\$225.00

7

Cash Advance Items

(We may and often do receive early payment and volume discounts on most cash advancement items. These monies will be retained by us.)

A.	Newspaper Obituaries	\$75.00	to	\$2,000.00
B.	Police Escorts	\$300.00	to	\$950.00
C.	Funeral Officiants (Ministers, Priests or Celebrants)	\$250.00	to	\$750.00
D.	Specialty Musicians (Soloist, Bagpipes, Harpist or others)	\$125.00	to	\$400.00

8	<u>Immediate Burial:</u>	\$4,645.00 to \$12,930.00
	Our charges (without funeral ceremony or facilities for viewing) include transfer of decedent to funeral home, basic services of funeral director and staff, basic refrigeration, hearse to cemetery, and equipment & staff for graveside service	
	A. Immediate burial with container provided by purchaser.	\$4,645.00
	B. Immediate burial with minimum priced casket	\$5,440.00
	C. Immediate burial with the highest priced casket	\$12,930.00
	D. Immediate burial with alternative container (Tray Case)	\$4,740.00
9	<u>Simple Cremation (Direct Cremation):</u>	\$3,620.00 to \$7,905.00
	Our charges (without funeral ceremony or facilities for viewing) include transfer of decedent to funeral home, basic services of funeral director and staff, and basic refrigeration. The crematory's fee (\$525 M-F) and the Medical Examiner's fee (\$100 required by Virginia statute) will be added to the funeral home's charges for any cremation service selected.	
	State and local laws do not require a casket for cremation.	
	If you want to arrange a direct cremation, you can use an alternative container. Alternative containers encase the body and can be made of materials like fiberboard or composition materials (with or without an outside covering). The containers we provide are: cardboard or composite wood containers.	
	The minimum of an alternative container is required by the crematory and Virginia statute.	
	A. Simple Cremation (Direct cremation) with Tray Case alternative container	\$3,715.00
	B. Simple Cremation (Direct cremation) with Oversize Tray Case alternative container	\$3,770.00
	C. Simple Cremation (Direct cremation) with Rental Casket Insert	\$3,865.00
	D. Simple Cremation (Direct cremation) with container provided by the purchaser (must encase and support decedent and be leak proof)	\$3,620.00
	E. Simple Cremation (Direct cremation) with minimum priced casket	\$4,415.00
	F. Simple Cremation (Direct cremation) with the highest priced casket acceptable for cremation	\$7,905.00
	G. Simple Cremation (Direct cremation) with any other casket would be this fee PLUS price of casket selected	\$3,620.00
	H. Simple Cremation (Direct cremation) with memorial service in our Chapel (No container included)	\$4,240.00
	I. Medical Examiner fee (as mandated by Virginia law)	\$100.00
	J. Crematory: cremation process fee (Up to 299 lbs) (Mon-Fri)	\$525.00
	K. Crematory: cremation process fee for extra weight (300 lbs. to 499 lbs)(Mon-Fri)	\$600.00
	L. Crematory: cremation process fee for extra weight (500 lbs. to 1100 lbs)(Mon-Fri)	\$1,050.00
	M. Crematory: additional fee for gathering at crematory (when more than 5 people)	\$200.00
	N. Mailing of Cremated Remains (Only through the U.S.P.S. & within the continental U.S.)	\$150.00
	O. Placing cremated remains into vessels (Up to 5 individual vessels, when not purchased thru us.)	\$25.00
10	<u>Receiving Decedent from another Funeral Home:</u>	\$3,920.00
	This charge includes transfer of decedent from airport, basic services of funeral director and staff, and hearse to cemetery. It does not include services of staff or use of facilities for viewing and/or funeral ceremony, or other preparation of decedent, if necessary.	
	A. Receiving decedent already in casket and a graveside service	\$4,495.00
	B. Receiving decedent already in casket, full visitation and graveside service	\$5,015.00
	C. Receiving decedent already in casket and a chapel service	\$4,640.00
	D. Receiving decedent already in casket, full visitation and chapel service	\$5,160.00
	E. Receiving decedent uncasketed, add for casketing and other preparations	\$225.00
	F. Transporting of decedent to funeral home within a 50 mile radius.	\$475.00
11	<u>Forwarding Decedent to Another Funeral Home:</u>	\$4,965.00
	This service includes transfer of decedent to funeral home, basic services of funeral director and staff, embalming, and cosmetology, grooming, dressing and casketing of the decedent and transportation to local airport. It does not include casket and/or shipping container, airline fees, services of staff or use of facilities for viewing and/or funeral ceremony.	
	A. Administration Fee (Required paperwork for forwarding remains to a foreign country)	\$350.00



CASKET PRICE LIST

Effective October 1, 2023

Price, Casket, & Availability Subject to Change without Notice

This casket price list shows a small selection of caskets that are available to the families we serve. We use all three major casket manufacturers that serve Central Virginia. Between them, we have access to over a thousand caskets. We use this list to show a good cross section of what is available. Through our virtual showroom, our staff will show you as many as you want to see in order to find the one that best fits your taste and price range.

Unlike other funeral homes, we do not double, triple or quadruple the wholesale cost of the caskets that we sell. We simply add a small fee to cover our handling, cleaning and presentation of the casket selected.

Not all caskets can accommodate every size person. We offer a selection of oversized caskets and alternative containers. Oversize caskets do have some restrictions concerning placement in mausoleums and pre-installed lawn crypts at our area cemeteries. Please consult with your funeral director if this will be a factor with the services that you are selecting. PLEASE REMEMBER when using some oversize caskets, you will also have to purchase an oversize outer burial container. Please discuss this matter with your funeral director.

All caskets are shown with the interior style and color that was chosen by the manufacturer. Just about every casket can be custom outfitted with any color or style interior in the manufacturer's inventory.

The fee to change the interior is \$500 and will take approx. 5 business days to complete and deliver to our funeral home. If you want to choose this option, please discuss this with your funeral director prior to scheduling any services.

Most of our caskets can be customized with a themed head-panel that you can select at the time of making arrangements. If a head panel is not included in the price of the casket or you want a personalized head-panel, there is a fee of \$125 and can possibly take 5 business days for delivery to our funeral home. Please discuss this with your funeral director.

DISCLAIMER

Morrissett Funeral & Cremation Service makes no representations or warranties regarding the caskets listed above. The only warranties, expressed or implied, granted in connection with caskets sold are the express written warranties, if any, extended by the manufacturers thereof. Morrissett Funeral & Cremation Service hereby expressly disclaims all warranties, expressed or implied, relating to the caskets, including, but not limited to the implied warranties of merchantability and fitness for a particular purpose.

Caskets Designed for Burial

* These caskets may not fit into a pre-installed lawn crypt at a cemetery



Harrison
Made of:
Solid Bronze - Metal
Interior Lining:
Almond Velvet

Vendor - Warfield-Rohr Casket Co.
\$8,285



Diplomat
Made of:
Solid Walnut - Wood
Interior Lining:
Almond Velvet

Vendor - Warfield-Rohr Casket Co.
\$6,430



Winfield
Made of:
Solid Cherry - Wood
Interior Lining:
Almond Velvet

Vendor - Warfield-Rohr Casket Co.
\$6,420



Lincoln
Made of:
Solid Copper - Metal
Interior Lining:
Pink Velvet

Vendor - Warfield-Rohr Casket Co.
\$6,315



Parthenon
Made of:
16 Gauge - Metal
Interior Lining:
Blue Velvet

Vendor - Warfield-Rohr Casket Co.
\$4,540



Carmen
Made of:
Solid Maple - Wood
Interior Lining:
Almond Velvet

Vendor - Warfield-Rohr Casket Co.
\$4,495



Mansfield
Made of:
Stainless Steel - Metal
Interior Lining:
Pink Velvet

Vendor - Warfield-Rohr Casket Co.
\$4,345



Sovereign
Made of:
Solid Pecan - Wood
Interior Lining:
Ivory Velvet

Vendor - Warfield-Rohr Casket Co.
\$4,170



Hearthside
Made of:
Solid Oak - Wood
Interior Lining:
Rosetan Crepe

Vendor - Warfield-Rohr Casket Co.
\$3,960



Woodsmen
Made of:
18 ga - Steel
Interior Lining:
Real Tree Camo (Eternal)

Vendor - Warfield-Rohr Casket Co.
\$3,840



Provincial
Made of:
Solid Poplar - Wood
Interior Lining:
Rosetan Crepe

Vendor - Warfield-Rohr Casket Co.
\$3,675



Country Pine
Made of:
Solid Pine - Wood
Interior Lining:
Champagne Weave

Vendor - Warfield-Rohr Casket Co.
\$3,660

Caskets Designed for Burial



Lexington
Made of:
Solid Poplar - Wood
Interior Lining:
Rosetan Crepe

Vendor - Warfield-Rohr Casket Co.
\$3,655



Dakota
Made of:
Solid Poplar - Wood
Interior Lining:
Arbutus Velvet

Vendor - Warfield-Rohr Casket Co.
\$3,400



Whitmire
Made of:
Solid Poplar - Wood
Interior Lining:
Rosetan Crepe

Vendor - Warfield-Rohr Casket Co.
\$3,250



American Barnwood
Made of:
Solid Oak - Wood
Interior Lining:
Realtree Camo

Vendor - Warfield-Rohr Casket Co.
\$3,235



Freedom
Made of:
18 Gauge - Metal
Interior Lining:
Uniform Blue Wool

Vendor - Warfield-Rohr Casket Co.
\$3,180



Patriot
Made of:
18 Gauge - Metal
Interior Lining:
Uniform Black Wool

Vendor - Warfield-Rohr Casket Co.
\$3,180



Sterling Antique White
Made of:
18 Gauge - Metal
Interior Lining:
Pink Crepe Crepe

Vendor - Warfield-Rohr Casket Co.
\$3,010



Sterling Empire Blue
Made of:
18 Gauge - Metal
Interior Lining:
Blue Crepe

Vendor - Warfield-Rohr Casket Co.
\$2,955



Civic
Made of:
18 Gauge - Metal
Interior Lining:
Blue Crepe

Vendor - Warfield-Rohr Casket Co.
\$2,935



Logan
Made of:
18 Gauge - Metal
Interior Lining:
Rosetan Crepe

Vendor - Warfield-Rohr Casket Co.
\$2,855



Cavalier White Sand
Made of:
20 Gauge - Metal
Interior Lining:
White Poly Crepe

Vendor - Warfield-Rohr Casket Co.
\$2,675



Endicott
Made of:
Poplar Veneer - Wood
Interior Lining:
White Poly Crepe

Vendor - Warfield-Rohr Casket Co.
\$2,555

Caskets Designed for Burial



Valencia
Made of:
20 Gauge - Metal
Interior Lining:
Pink Crepe

Vendor - Warfield-Rohr Casket Co.
\$2,390



LaSalle
Made of:
20 Gauge - Metal
Interior Lining:
White Crepe

Vendor - Warfield-Rohr Casket Co.
\$2,305



Hilton
Made of:
20 Gauge - Metal
Interior Lining:
Rosetan Crepe

Vendor - Warfield-Rohr Casket Co.
\$2,255



Cherokee Rose
Made of:
18 Gauge - Metal
Interior Lining:
Pink Poly Crepe

Vendor - Warfield-Rohr Casket Co.
\$2,990



Jessup
Made of:
20 Gauge - Metal
Interior Lining:
White Crepe

Vendor - Warfield-Rohr Casket Co.
\$2,500



Bradford
Made of:
20 Gauge - Metal
Interior Lining:
White Crepe

Vendor - Warfield-Rohr Casket Co.
\$1,965



Denton
Made of:
Cloth - Cardboard
Interior Lining:
Rosetan Crepe

Vendor - Warfield-Rohr Casket Co.
\$1,725



Vantage
Made of:
20 Gauge - Metal
Interior Lining:
Moselle Crepe

Vendor - Warfield-Rohr Casket Co.
\$1,080



Baron
Made of:
20 Gauge - Metal
Interior Lining:
Rosetan Crepe

Vendor - Warfield-Rohr Casket Co.
\$1,080



Kinsey Cloth
Made of:
Composition Board
Interior Lining:
White Crepe

Vendor - Warfield-Rohr Casket Co.
\$795

Caskets Designed for Cremation



York
Made of:
Cherry Veneer - Wood
Interior Lining:
Ivory Velvet
Vendor - Warfield-Rohr Casket Co.
\$4,285



Simeon
Made of:
Solid Poplar - Wood
Interior Lining:
White Poly Crepe
Vendor - Warfield-Rohr Casket Co.
\$2,200



Ira
Made of:
Solid Oak - Wood
Interior Lining:
White Poly Crepe
Vendor - Warfield-Rohr Casket Co.
\$1,715



Golden Cross (Rental)
Made of:
18 Gauge - Metal
Interior Lining:
White Chalet Crepe
Vendor - Thacker Casket Co.
\$1,295



Longley
Made of:
Veneer Poplar - Wood
Interior Lining:
Rosetan Crepe
Vendor - Thacker Casket Co.
\$1,908



In God's Care (Rental)
Made of:
20 Gauge - Metal
Interior Lining:
Blue Chalet Crepe
Vendor - Thacker Casket Co.
\$1,295



Lord's Prayer (Rental)
Made of:
20 Gauge - Metal
Interior Lining:
Blue Chalet Crepe
Vendor - Thacker Casket Co.
\$1,295



Ascent Blush (Rental)
Made of:
20 Gauge - Metal
Interior Lining:
White Chalet Crepe
Vendor - Thacker Casket Co.
\$1,295



Donovan Oversize (Rental)
Made of:
Solid Oak - Wood
Interior Lining:
Beige Crepe
Vendor - Warfield-Rohr Casket Co.
\$1,395



Accord Oversize (Rental)
Made of:
20 Gauge - Metal
Interior Lining:
White Chalet Crepe
Vendor - Thacker Casket Co.
\$1,395

Caskets Designed for Cremation (continued)



White Rose (Rental)

Made of:

18 Gauge - Metal

Interior Lining:

Pink Chalet Crepe

Vendor - Thacker Casket Co.

\$895



Ascent Graphite (Rental)

Made of:

20 Gauge - Metal

Interior Lining:

White Chalet Crepe

Vendor - Thacker Casket Co.

\$895



Kinsey Cloth

Made of:

Composition Board

Interior Lining:

White Poly Crepe

Vendor - Warfield-Rohr Casket Co.

\$795

Alternative Container Designed for Cremation



Tray Case

Made of:

Composition Board

\$95



Oversize Tray Case

Made of:

Composition Board & Plywood

Interior Lining:

No Interior Material

Vendor - Warfield-Rohr

\$150



Green Burial / Cremation Containers



Willow Casket

Made of:

Natural Woven Willow Wood

Interior Lining:

Natural White Cotton Linen

Vendor - Passages International

\$1,425



Bamboo Casket

Made of:

Sustainable Woven Bamboo

Interior Lining:

Natural White Cotton Linen

Vendor - Passages International

\$1,369



Six Point Bamboo Casket

Made of:

Sustainable Woven Bamboo

Interior Lining:

Natural White Cotton Linen

Vendor - Passages International

\$1,095



White Shroud

Made of:

Natural White Cotton Linen

Interior Lining:

Natural White Cotton Linen

Vendor - Passages International

\$495

Oversized Caskets Designed for Burial

* These caskets may not fit into a pre-installed lawn crypt at a cemetery



Ratlin Grande
28 1/4" x 78 1/2" - 34" VLT
Solid Oak - Wood
Interior Lining:
White Velvet
Vendor - Warfield-Rohr Casket Co.
\$5,030



Vista Oak
27 1/4" x 81" - 30" VLT
Solid Oak - Wood
Interior Lining:
Almond Velvet
Vendor - Warfield-Rohr Casket Co.
\$4,775



Vista Poplar
27 1/4" x 81" - 30" VLT
Solid Poplar - Wood
Interior Lining:
Rosetan Crepe
Vendor - Warfield-Rohr Casket Co.
\$3,965



Ridgefield
28 3/4" x 82 1/2" - 30" VLT
18 Gauge - Metal
Interior Lining:
White Crepe
Vendor - Warfield-Rohr Casket Co.
\$3,470



Ridgefield Diamond Blue
28 3/4" x 82 1/2" - 30" VLT
18 Gauge - Metal
Interior Lining:
Blue Crepe
Vendor - Warfield-Rohr Casket Co.
\$3,470



Ridgefield Alameda Rose
28 3/4" x 82 1/2" - 30" VLT
18 Gauge - Metal
Interior Lining:
Rosetan Crepe
Vendor - Warfield-Rohr Casket Co.
\$3,470



Ridgefield White
28 3/4" x 82 1/2" - 30" VLT
18 Gauge - Metal
Interior Lining:
White Crepe / Pink Available
Vendor - Warfield-Rohr Casket Co.
\$3,470



Viscount
28 3/4" x 82 1/2" - 30" VLT
Solid Poplar - Wood
Interior Lining:
Rosetan Crepe
Vendor - Warfield-Rohr Casket Co.
\$3,390



McKinley Silver
28 3/4" x 82 1/2" - 30" VLT
20 Gauge - Metal
Interior Lining:
White Crepe
Vendor - Warfield-Rohr Casket Co.
\$2,825



McKinley White Sand
28 3/4" x 82 1/2" - 30" VLT
20 Gauge - Metal
Interior Lining:
Rosetan Crepe
Vendor - Warfield-Rohr Casket Co.
\$2,825



McKinley Blue
28 3/4" x 82 1/2" - 30" VLT
20 Gauge - Metal
Interior Lining:
Blue Crepe
Vendor - Warfield-Rohr Casket Co.
\$2,825



McKinley Antique White
28 3/4" x 82 1/2" - 30" VLT
20 Gauge - Metal
Interior Lining:
Pink Crepe / White Available
Vendor - Warfield-Rohr Casket Co.
\$2,825

Oversized Caskets Designed for Burial

* These caskets may not fit into a pre-installed lawn crypt at a cemetery



Majestic Copper
28 3/4" x 82 1/2" - 30" VLT
20 Gauge - Metal
Interior Lining:
Rosetan Crepe
Vendor - Warfield-Rohr Casket Co.
\$2,550



Majestic Silver
28 3/4" x 82 1/2" - 30" VLT
20 Gauge - Metal
Interior Lining:
White Crepe
Vendor - Warfield-Rohr Casket Co.
\$2,550



Majestic Blue
28 3/4" x 82 1/2" - 30" VLT
20 Gauge - Metal
Interior Lining:
Blue Crepe
Vendor - Warfield-Rohr Casket Co.
\$2,550



Majestic White/Pink
28 3/4" x 82 1/2" - 30" VLT
20 Gauge - Metal
Interior Lining:
Pink Crepe
Vendor - Warfield-Rohr Casket Co.
\$2,550



W14 25"
25 1/2" x 81" - 30" VLT
Cloth Covered Fiberboard
Interior Lining:
White Crepe
Vendor - Warfield-Rohr Casket Co.
\$1,960



W14 29"
29 1/2" x 84" - 42" VLT
Cloth Covered Fiberboard
Interior Lining:
White Crepe
Vendor - Warfield-Rohr Casket Co.
\$1,990



W14 33"
33" x 82" - 42" VLT
Cloth Covered Fiberboard
Interior Lining:
White Crepe
Vendor - Warfield-Rohr Casket Co.
\$2,070



Whitney Blue 32" NG
32 1/2" x 84" - 34" VLT
20 Gauge - Metal
Interior Lining:
Blue Crepe
Vendor - Warfield-Rohr Casket Co.
\$3,260



Whitney Copper 32" NG
32 1/2" x 84" - 34" VLT
20 Gauge - Metal
Interior Lining:
Rosetan Crepe
Vendor - Warfield-Rohr Casket Co.
\$3,260



Whitney Silver 32"/35" G
34" VLT / 42" VLT
20 Gauge - Metal
Interior Lining:
White Crepe
Vendor - Warfield-Rohr Casket Co.
\$3,720/\$3,935



Whitney Monarch Blue 32"/35" G
34" VLT / 42" VLT
20 Gauge - Metal
Interior Lining:
Blue Crepe
Vendor - Warfield-Rohr Casket Co.
\$3,720/\$3,935



Rosebrook
28" x 83 5/8" - 30" VLT
Veneer - Fiberboard
Interior Lining:
Rosetan Crepe
Vendor - Warfield-Rohr Casket Co.
\$2,400

OUTER BURIAL CONTAINER **PRICE LIST**

Effective October 1, 2023

Price, Container & Availability Subject to
 Change Without Notice

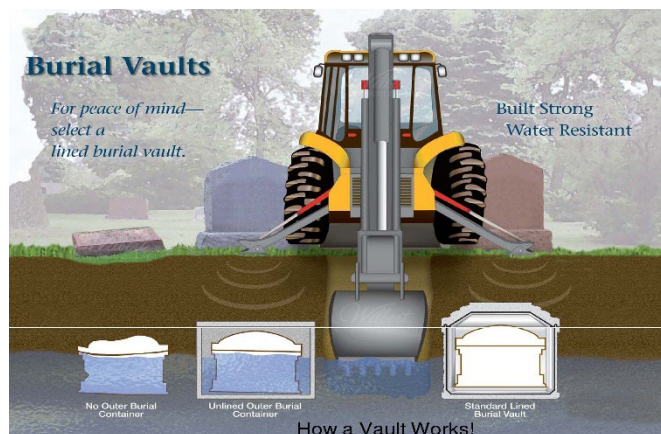
State or local law does not require that you buy a container to surround the casket in the grave. However, many cemeteries require that you have such a container so that the grave will not sink in. Either a grave liner or a burial vault will satisfy these requirements.

What does an Outer Burial
Container do?

Its primary purpose is to support
the ground above the casket.

A grave liner will do this.

However some families choose
the extra level of protection that is
provided by a burial vault.



Our fee to open and close a grave in a church or private cemetery is \$1,650
any day of the week.

Holiday Charge on an Outer Burial Container is \$600.
(No Burials on Thanksgiving and Christmas.)

Any special charges such as hauling extra dirt off site or hand digging of
grave will be priced upon request.

All outer burial containers listed are provided by:
Markam Burial Vault Co.

DISCLAIMER OF WARRANTIES

Morrissett Funeral & Cremation Service makes no representations or warranties regarding the outer burial containers listed above. The only warranties, expressed or implied, granted in connection with outer burial containers sold are the express written warranties, if any, extended by the manufacturers thereof. Morrissett Funeral & Cremation Service hereby expressly disclaims all warranties, expressed or implied, relating to the outer burial containers, including, but not limited to the implied warranties of merchantability and fitness for a particular purpose.

\$3,500



Bronze Triune (Markham Burial Vault Co.)

High-strength concrete with bronze and high-impact plastic
Cover and base reinforced with non-rusting bronze
Lustrous bronze carapace and accent bars helps distribute the weight
from the earth and heavy cemetery equipment across the cover

Inside 30"x 86" Outside 34"x 90"

\$2,700



Stainless Steel Triune (Markham Burial Vault Co.)

Cover and base double-reinforced with strong, corrosion-resistant
stainless steel and high-impact plastic
Brilliant stainless steel carapace. Available in masculine, feminine or
patriotic versions

Inside 30"x 86" Outside 34"x 90"

\$2,450



Tribute (Markham Burial Vault Co.)

High-strength concrete and plastic interior and exterior (2nd
generation plastic) has 4 times the impact strength of the Strentex®
liner. Unidex® bonding system, super seal butyl sealant, spline-lock
technology. Polished simulated marble exterior finish. Plastic
carapace and concrete cover help distribute the weight from the earth
and heavy cemetery equipment across the cover. Personalization
choices available

Inside 30"x 86" Outside 34"x 90"

\$2,045



Venetian (Markham Burial Vault Co.)

Finest single-reinforced burial vault. High-strength concrete with high-
impact plastic and a reinforced cover and base. Inner liner available
in marbling or solid. Personalization choices available. Church
window, cross or plain carapas.

\$1,925



Citadel (Markham Burial Vault Co.)

Single-reinforced burial vault. High-strength concrete with high-impact
plastic and a reinforced cover and base. Gloss black interior and
cover.

Inside 30"x 86" Outside 34"x 90"

\$1,725



Continental (Markham Burial Vault Co.)

Single-reinforced burial vault (concrete/plastic)
Durable concrete exterior with a plastic-reinforced cover and base

Inside 30"x 86" Outside 34"x 90"

\$1,630



Monticello (Markham Burial Vault Co.)

Single-reinforced burial vault
Concrete exterior with a plastic-reinforced cover and base

Inside 30"x 86" Outside 34"x 90"

\$1,450



Monarch (Markham Burial Vault Co.)

Single-reinforced burial vault. Painted Exterior.

Inside 30"x 86" Outside 34"x 89"

\$1,350



Grave Liner (Markham Burial Vault Co.)

Single-layer concrete

Inside 30"x 86" Outside 32"x 88"

\$2,190



Clark 12ga. Standard Steel Vault (Markham)

This steel vault offers long lasting protection at a moderate price. Long term strength as evident in such long standing structures as the John Hancock building in Chicago and the U.S. Steel building in Pittsburg. Clark Vaults can protect the casket from water and other elements through the use of the Air Seal Principle.

Inside 31" x 88" Outside 34.5' x 90.5"



6500 Iron Bridge Rd.
N. Chesterfield, VA 23234
www.morrissett.com
804-275-7828

OVERSIZE OUTER BURIAL CONTAINER & GRAVE PREP SERVICE CHARGES

PRICE LIST

Effective October 1, 2023
Price, Container & Availability
Subject to Change without Notice

Markham Oversize Burial Vaults

<u>ID #</u>	<u>Name</u>	<u>Description</u>	<u>Dimension</u>	<u>Retail</u>
4571-W	Monticello (O/S)	Concrete-Polystyrene Lined	34 x 90 inside / 43 x 98 outside	\$2,445.00
4582-W	American (O/S)	Concrete	36 x 90 in / 45 x 90 out	\$1,645.00
4583-W	American (O/S) XL	Concrete	42 x 92 in 47 x 100 out	\$1,800.00
4584-W	Grave Liner (O/S)	Concrete	36 x 90 in / 45 x 90 out	\$1,610.00
4586-W	Grave Liner (O/S) XL	Concrete	42 x 92 in 47 x 100 out	\$1,750.00
4583-W	Clark Oversize Steel Vault	12 gauge Steel	42 x 92 in 45 x 96 out	\$2,640.00

Service Charges for Grave Prep by our Vault Companies

Opening & Closing (Everyday) (includes, tent, grass, & chairs)	\$1,650.00
Set up without vault purchase (Tent, Grass, & Chairs)	\$525.00
Opening & Closing for urn (Includes, tent, grass, & chairs)	\$750.00
Opening & Closing for infant/baby (includes, tent, grass, & chairs)	\$750.00
Lowering Device	\$110.00
Holiday Charge (Add)	\$600.00
Double Depth grave O/C (Add)	\$350.00
Hand Digging (If Available) (Add)	\$850.00
Dirt removed from cemetery	\$250.00

Outer Burial Container Requirements

State or local law does not require that you buy a container to surround the casket in the grave. However, many cemeteries require that you have such a container so that the grave will not sink in. Either a grave liner or a burial vault will satisfy this requirement.

WARRANTIES

Our funeral home makes no representations or warranties about the protective value of certain vaults other than those made by the manufacturer. The only warranties, expressed or implied, granted in connection with goods sold with this funeral service are the express written warranties, if any, extended by the manufacturer thereof. No other warranties and no warranties of merchandising fitness for a particular product are extended by the seller.



MORRISSETT

Funeral and Cremation Service

A Life Celebration Home

6500 Iron Bridge Road • N. Chesterfield, VA 23234

804-275-7828 • www.morrissett.com

URN & URN VAULT PRICE LIST

Effective October 1, 2023

Price, Urn & Availability Subject to Change Without Notice

Why have a place of Permanent Memorialization?

A place of healing and reflection

A consistent place for healing allows for family and friends to find comfort long after the services are over. There are a wide variety of personalized options for cremation. Finding the perfect memorial is a reflection of the life lived for future generations to learn about their ancestry.

Scattering of cremated remains should be done legally. It can be done in a beautiful and meaningful ceremony, or simple and private. However, we always suggest that some cremated remains be retained and placed where you can gather and remember - a place that is marked for all to see that this life mattered. (Please inquire about rental of our air powered scattering gun.)

Choosing the appropriate vessel to place these treasured remains is a difficult decision. We do not pressure you to make it quickly. We will provide a temporary container at no charge and provide you with catalogues and other resources to help you make an informed decision.

This **Urn Price List** shows a small selection of urns that are available to the families we serve. We use all the major urn manufacturers. Between them we have access to thousands of urns. We use this list to show a good cross section of what is available. Through our virtual showroom, our staff will show you as many as you want to see in order to find the one that best fits your taste and price range.

Unlike other funeral homes, we do not double, triple or quadruple the wholesale cost of the urns that we sell. We simply add a few dollars to cover our handling, cleaning and presentation of the urn selected.

Custom Engraving, expedited shipping, and other special requests do have additional charges associated with them. Your funeral director will be able to give you an estimate of these charges before any order is finalized.

DISCLAIMER

Morrissett Funeral & Cremation Service makes no representations or warranties regarding the urns listed. The only warranties, expressed or implied, granted in connection with urns sold are the express written warranties, if any, extended by the manufacturers thereof. Morrissett Funeral & Cremation Service hereby expressly disclaims all warranties, expressed or implied, relating to the urns, including, but not limited to the implied warranties of merchantability and fitness for a particular purpose.

URNS SUITABLE FOR DISPLAY



Forever Heart

Made of:
Cultured Stone
Supplied by:
Crescent Memorial
\$468



Classic Pewter

Made of:
Pewter
Supplied by:
Crescent Memorial
\$173



The Passage

Made of:
Ceramic
Supplied by:
Crescent Memorial
\$338



Howard Miller Reflection

Made of:
Cherry
Supplied by:
Crescent Memorial
\$434

URNS SUITABLE FOR PLACEMENT IN COLUMBARIUM OR NICHE



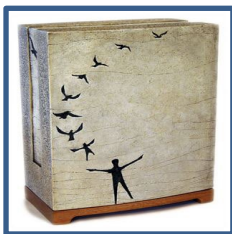
Bronze Chest

Made of:
Solid Bronze
Supplied by:
Crescent Memorial
\$528



Natural

Made of:
Hardwood
Supplied by:
Thacker
\$110



In Flight

Made of:
Stone
Supplied by:
Crescent Memorial
\$528



Paragon Peacock

Made of:
Stained Glass
Supplied by:
Thacker
\$259

URNS SUITABLE FOR BURIAL



Black Granite

Made of:
Cultured Granite
Supplied by:
Crescent Memorial
\$248



Crescent Marble

Made of:
Cultured Marble
Supplied by:
Crescent Memorial
\$223



Tribute

Made of:
Solid Marble
Supplied by:
Wilbert-Roland
\$245



Regal

Made of:
Solid Marble
Supplied by:
Wilbert-Roland
\$245

URNS SUITABLE FOR SCATTERING



Scattering Tubes

Made of:
Pulp Core
Supplied by:
Crescent Memorial
\$78



Egg Bird House

Made of:
Clay
Supplied by:
Cremation Solutions
\$245



Walking Stick

Made of:
Fiberboard & Plastic
Supplied by:
UPD Urns
\$195



Natural Scatter

Made of:
Compact Fiberboard
Supplied by:
Crescent Memorial
\$83

BIODEGRADABLE URNS



Natural Salt

Made of:
Natural Salt
Supplied by:
Crescent Memorial
\$260



The Living Urn

Made of:
Biodegradable Composite
Supplied by:
The Living Urn
\$195



Natural Earth

Made of:
Clay
Supplied by:
Crescent Memorial
\$198



Eco Sphere Earth

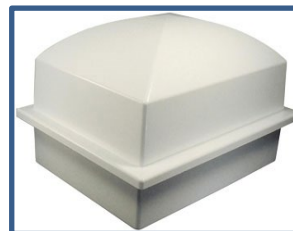
Made of:
Biodegradable Composite
Supplied by:
Crescent Memorial
\$235

URN VAULTS (May be required by Cemetery)



Ventian

Made of:
Concrete/Marbelon
Supplied by:
Markam Wilbert
\$695



Crowne

Made of:
Composite Plastic
Supplied by:
Crescent Memorial
\$144



Universal

Made of:
Concrete/Marbelon
Supplied by:
Markham Wilbert
\$515



Superior Urn Vault

Made of:
Composite Plastic
Supplied by:
Crescent Memorial
\$228

KEEPSAKE PRODUCTS

Most full size urns come in a smaller version to use as keepsakes.

However there are many unique keepsake vessels. These are just a few.



Butterfly Lamp

Made of:
Brass & Glass
Supplied by:
Crescent Memorial
\$218



Seashell Keepsake

Made of:
Stone
Supplied by:
Crescent Memorial
\$135



Wooden Heart

Made of:
Hardwood
Supplied by:
Crescent Sales
\$75



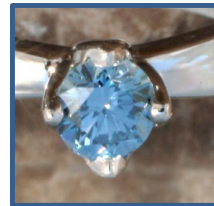
Kaleidoscope

Made of:
Wood, Metal & Glass
Supplied by:
Forevurn
\$335



Tattoo Ink

Made of:
DNA or cremated remains
Supplied by:
Everence
Temporarily Unavailable



LifeGem

Made of:
Synthetic Diamond
Supplied by:
LifeGem
\$1999 & Up

REMEMBRANCE JEWELRY

This jewelry can be a vessel to hold a small amount of hair or cremated remains.

Some contain the fingerprint or DNA of a loved one.

This is just a small collection of items available.



Life Print Necklace

Made of:
Sterling Silver
Supplied by:
Crescent Memorial
\$189



Life Print Ring

Made of:
Sterling Silver
Supplied by:
Crescent Memorial
\$400



Heart Glass Pendant

Made of:
Hand Blown Glass
Supplied by:
Crescent Memorial
\$150



Glass Cylinder

Made of:
Antique Silver
Supplied by:
Crescent Memorial
\$209



Cross

Made of:
Sterling Silver
Supplied by:
Crescent Memorial
\$199



Madisyn Bracelet

Made of:
Sterling Silver
Supplied by:
Capture Bead Keepsakes
\$86

Engraving / Personalization Form

Please send all custom art images as a link or attachment to:
order@sinosource.biz

Purchase Order #

Company	Morrisett Funeral & Cremation Service	Order Date	
Contact & Phone	804-275-7828 Name: _____		
Email	staff@morrisett.com	Required Arrival Date	
Fax	804-275-8052		
Bill To	Morrisett Funeral & Cremation Service 6500 Iron Bridge Rd. N. Chesterfield, VA 23234		
Ship To	Morrisett Funeral & Cremation Service 6500 Iron Bridge Rd. N. Chesterfield, VA 23234		

Engraving Information:

Item/Urn Code		Item/Urn Name		wholesale price	\$ _____				
Appliqué Code		Appliqué Name		wholesale price	\$ _____				
ENG-3 (1-3 Lines of Text)	Text Line 1			} \$40	\$ _____				
	Text Line 2								
	Text Line 3								
ENG-Add	Additional Line of Text			\$10 x _____	\$ _____				
Back Fill	Desired Color of Text (Circle One)	Gold	Silver	White	Black	Brown	None	\$10	\$ _____
ENG-SI	Standard Image			\$30	\$ _____				
ENG-CI	Custom Image (please email .JPG)			\$60	\$ _____				
LOCATION	Engraving Location (check all that apply)	<input type="checkbox"/> Front <input type="checkbox"/> Top <input type="checkbox"/> Side <input type="checkbox"/> Back <input type="checkbox"/> Other				Total =	\$ _____		

Font Choices For Engraved Text:

- | | |
|---|--|
| <input type="checkbox"/> <i>Amazone</i> | <input type="checkbox"/> <i>Lydian</i> |
| <input type="checkbox"/> Arial | <input type="checkbox"/> <i>Murray Hill</i> |
| <input type="checkbox"/> Bedrock | <input type="checkbox"/> <i>Park Avenue</i> |
| <input type="checkbox"/> <i>Brush Script</i> | <input type="checkbox"/> Souvenir |
| <input type="checkbox"/> ENGRAVERS | <input type="checkbox"/> Times New Roman |
| <input type="checkbox"/> <i>Shelley Allegro</i> | <input type="checkbox"/> <i>Monotype Corsiva</i> |

Special Notes:

Our engraving department will choose the best location for engraved text and images. For special engraving requests, (on a separate page) please provide a sketch showing placement of your text and/or image. Length of text lines may be limited by the size and design of the urn selected. Please call us at: 804-275-7828 to inquire about our engraving. Please email all custom art to: staff@morrisett.com



6500 Iron Bridge Rd.
Richmond, VA 23234
www.morrissett.com
804-275-7828

CASH ADVANCE
PRICE LIST
Effective October 1, 2023
Price, Item & Availability
Subject to Change without Notice

Richmond Newspapers	(\$7.00 per line + \$50 for online)	\$450.00	per day estimate
Picture takes	Approx. 5 Lines which cost	N/C	
Military emblem / Flag takes	4 lines which cost	N/C	
Death Certificates	\$ 12.00 each		
For corrections of families' errors, there will be a fee of \$110.00 plus \$10.00 for each amended line if permissible without court order.			
Police Escort Fees are calculated from our funeral home, charges may change from other locations.			
Chesterfield Police Escort (from funeral home to Dale or Maury cemeteries)		\$150.00 x 2	= \$300
Chesterfield Police Escort (from funeral home or offsite to all other cemeteries)		\$150.00 x 3	= \$450
For escort from F.H. to Church then to Cemetery inside Chesterfield	-		Call for price
City of Richmond Police	\$126.00 per Officer (Regular) Plus \$35 for Vehicle	=	\$161.00
	\$157.50 per Officer (Holiday) Plus \$35 for Vehicle	=	\$192.50
Number of City Officers used is equal to number of County Officers used.			
St. Augustine Catholic Church		\$125.00	Organist
		\$125.00	Cantor
		\$125.00	Church Programs
Skinquarter Baptist Church Cemetery (Maintenance Fee)		\$50.00	
Cornerstone Assembly of God	\$250		
(Fee does not include honorarium for minister)		\$125.00	Funeral Coordinator
		\$65.00	Sound Tech
		\$60.00	Musician/Soloist (Each)
Branch's Baptist Church		\$125-\$150	Organist
		\$50.00	Sound / AV Tech
		\$90.00	Custodian-santuary & Kincheloe Hall
		\$75.00	Custodian-santuary
Other Church's fees vary, we will inquire for the family.			
Medical Examiner (Cremation)	\$100.00		
Open and Close Grave in local Church or Private Cemetery		\$1,650.00	
*(Grave digging charges are for Monday to Sunday excluding Holidays)			
Clergy Honorarium (If we get)	\$300.00		
minimum amounts, more if family wishes	\$225.00 for Graveside		
	\$225.00 for Memorial		
Certified Funeral Celebrant	\$395.00		
Formal Limo	\$450.00 and up (call for quote)		
Bagpiper (one location)	\$250.00		
(add an additional \$100 if requested at two locations)			
Harpist	\$350.00		
Soloist	\$200.00		
Outside Pianist / Organist	\$125.00		

*We do receive discounts for volume & early payment on most cash advance items.
These monies will be retained by our funeral home.

Catering by Publix

Boar's Head Classic Sandwich Platter

Roasted Turkey Breast with American Cheese, Smoked Black Forest Ham with Swiss, and London Broil Oven Roasted Beef with Vermont Cheddar.

Small Platter	10 Servings	\$37.00	<input type="text"/>	<input type="text"/>
Medium Platter	18 Servings	\$53.00	<input type="text"/>	<input type="text"/>
Large Platter	28 Servings	\$77.00	<input type="text"/>	<input type="text"/>

Crossant Sandwich

Filled with your choice of deli salads: Tuna, Chicken, Egg, Ham, and Cheddar Jack Cheese Spread.

Small Platter	10 Servings	\$30.00	<input type="text"/>	<input type="text"/>
Medium Platter	18 Servings	\$38.00	<input type="text"/>	<input type="text"/>
Large Platter	28 Servings	\$44.00	<input type="text"/>	<input type="text"/>

Boar's Head Classic Slider Trio Platter

Roasted Turkey Breast and Fontina, Beechwood Smoked Black Forest Ham and Mild Swiss, and London Broil Oven Roasted Beef and Vermont Cheddar

Small Platter	10 Servings	\$37.00	<input type="text"/>	<input type="text"/>
Medium Platter	18 Servings	\$53.00	<input type="text"/>	<input type="text"/>
Large Platter	28 Servings	\$77.00	<input type="text"/>	<input type="text"/>

Boar's Head Pinwheels

Your choice of fillings: Turkey-Avocado with Bacon, Italian, Roast Beef, Vegetarian, and Ham & Cheese

Small Platter	10 Servings	\$49.00	<input type="text"/>	<input type="text"/>
Medium Platter	18 Servings	\$68.00	<input type="text"/>	<input type="text"/>
Large Platter	28 Servings	\$82.00	<input type="text"/>	<input type="text"/>

Brownies

Fudgy Chocolate, Walnut Cream Cheese, and Walnut Fudge

Medium Platter	24 Pieces	\$20.00	<input type="text"/>	<input type="text"/>
Large Platter	46 Pieces	\$30.00	<input type="text"/>	<input type="text"/>

Cookie Bites

Calypso Crunch, Chunky Chocolate Chipper, and Macadamia

Medium Platter	48 Pieces	\$20.00	<input type="text"/>	<input type="text"/>
Large Platter	96 Pieces	\$33.00	<input type="text"/>	<input type="text"/>

Vegetable Platter

Carrots, Celery, Cucumbers, Cauliflower, Broccoli, Tomatoes with Ranch or Blue Cheese

Small Platter	10 Servings	\$28.00	<input type="text"/>	<input type="text"/>
Medium Platter	18 Servings	\$33.00	<input type="text"/>	<input type="text"/>
Large Platter	28 Servings	\$39.00	<input type="text"/>	<input type="text"/>

Fresh Fruit

Season's Best, Including Grapes, Strawberries, Apple Slices, Pineapple, and Melons

Small Platter	10 Servings	\$29.00	<input type="text"/>	<input type="text"/>
Medium Platter	18 Servings	\$39.00	<input type="text"/>	<input type="text"/>
Large Platter	28 Servings	\$50.00	<input type="text"/>	<input type="text"/>

Boar's Head Nibbler

Array of Bite-size Cubes of Assorted Cheeses, Turkey, Salami, and Ham

Small Platter	10 Servings	\$39.00	<input type="text"/>	<input type="text"/>
Medium Platter	18 Servings	\$50.00	<input type="text"/>	<input type="text"/>
Large Platter	28 Servings	\$64.00	<input type="text"/>	<input type="text"/>

Grilled Chicken Pasta Salad Bowl

Seasoned Grilled Chicken, Tricolor Rotini Pasta, Tomato, Green Onion, and Fresh Herbs

8-12 Servings	\$31.00	<input type="text"/>	<input type="text"/>
---------------	---------	----------------------	----------------------

Quinoa Salad Bowl

Quinoa, Fresh Spinach, Edamame, Peanuts, Raisins, Tangy Citrus Dressing

8-12 Servings	\$28.00	<input type="text"/>	<input type="text"/>
---------------	---------	----------------------	----------------------

Subtotal

Sales Tax 6%

Delivery Fee \$15.00

Total

BROCKS BAR-B-QUE

S I N C E 1 9 7 5



MINCED PORK SPECIAL

20 PEOPLE (MINIMUM)
\$8.99 PER PERSON
\$179.80 (20 people)
\$449.50 (50 People)

MINCED BBQ
BAKED BEANS COLE
SLAW POTATO SALAD
SANDWICH BUNS
1 BOTTLE OF SAUCE

MINCED PORK & GRILLED CHICKEN SPECIAL

20 PEOPLE (MINIMUM)
\$10.99 PER PERSON
\$219.80 (20 People)
\$549.50 (50 People)

GRILLED MARINATED CHICKEN BREASTS
MINCED BBQ
BAKED BEANS
COLE SLAW
POTATO SALAD
SANDWICH BUNS
1 BOTTLE OF SAUCE

FRIED CHICKEN & MINCED PORK

20 PEOPLE (MINIMUM)
\$10.99 PER PERSON
\$219.80 (20 People)
\$549.50 (50 People)

FRIED CHICKEN
MINCED BBQ
BAKED BEANS COLE
SLAW POTATO SALAD
SANDWICH BUNS
1 BOTTLE OF SAUCE

PULLED CHICKEN & MINCED PORK SPECIAL

20 PEOPLE (MINIMUM)
\$10.99 PER PERSON
\$219.80 (20 People)
\$549.50 (50 People)

PULLED CHICKENBBQ
MINCED BBQ
BAKED BEANS COLE
SLAW POTATO SALAD
SANDWICH BUNS
1 BOTTLE OF SAUCE

HOMEMADE COBBLERS

APPLE, PEACH, OR CHERRY
(APPROX. 24 SERVINGS) \$42.00 each

BROWNIES (\$1.50 ea.)

COOKIES (\$5.00 per two dozen)

Sales Tax of 6% and Delivery of \$25
per order will be added. Quantity can be
increased by multiples of 5 only.
Prices subject to change.

NOTES

This image shows a single sheet of white paper with horizontal ruling lines. The lines are evenly spaced and run across the width of the page. There are no margins, text, or other markings on the paper.



WHAT IS AFTERCARE? WHAT IS COMMUNITY CARE?

AFTERCARE is an extension of care and support for families we have served. This service is born from a heart of compassion on the part of the Morrissett staff. We are committed to providing care and support well after the funeral or memorial service.

Our Community Care/Aftercare Director reaches out to each family approximately two weeks after the service to assess the needs of each family. Our director is available for a home or office visit to assist family members in their grieving process. In addition, we offer other resource referrals to assist families having to cope with the grief associated with suicide, homicide, addiction overdose, and other sudden deaths, as well as the pain resulting from the death of a child.

We also facilitate quarterly support groups for the death of a spouse along with a suicide support group and a general grief support group. Our desire is to provide any number of support groups addressing specific grief needs because we know that the pain of grief lasts beyond the funeral service.

COMMUNITY CARE is the extension of our family care to the greater community. Our grief support groups are available to all families in our community struggling with grief whether they have come through our doors or not. We believe that when the family is well and strong, the community is healthier and stronger.

In addition to quarterly and ongoing support groups, we sponsor workshops on relevant life issues such as aging, divorce, loss of a career or the challenge of living with a person of addiction. We also enjoy remembering our families with Anniversary, Birthday, Mother's Day, Father's Day, and Veteran's Day cards. Perhaps the most gratifying service we provide is our annual Holiday Remembrance gathering where we honor those families who have grieved the death of a loved one the past year with a quality lunch, memorial candle lighting, and a holiday ornament with the name of the deceased inscribed upon it. This is simply our way of expressing our love for our community.

IMPORTANT NOTE: Our aftercare / community care services are provided for you and your family at no extra cost. We invite you to participate in any or all of our activities.



Greg Webber
Aftercare
&
Community Care
Director
804-873-0441
greg@morrissett.com

Contact: Morrissett Funeral & Cremation Service
Community Care/Aftercare Director
communitycare@morrissett.com
Office: (804) 275-7828



Margaret Edie
Funeral Director/Owner



Larry Spiaggi
CXO
(Chief Experience Officer)



Larry "LC" Corey
Director/Comptroller



Curtis Sink
Funeral Director



Dick Booker
Director Emeritus



Kaylinn Bezenar
Pre-Need Director

Aaron Enoch
Funeral Director

Lindsay Schraad
Funeral Director

Fatima Beltran Fuentes
Funeral Director

Our Vision: To Show Our Community the Value of Every Person's Life



We proudly support many worthy organizations including:

